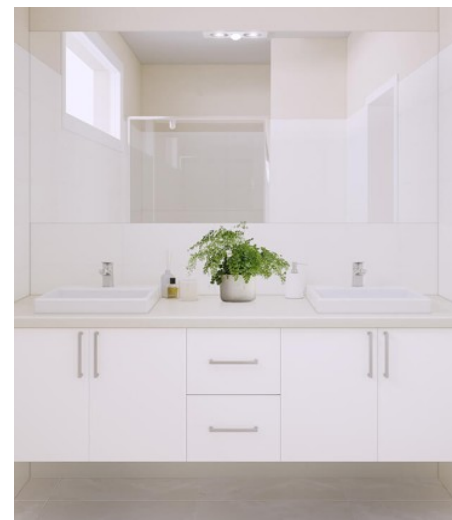


236 (NO. 22) SOUTH POINT STREET PORT NOARLUNGA SOUTH

\$820,000



**MOVE
IN EARLY
2025**



2 LIVING 4 BEDROOMS 2 BATHROOMS DOUBLE GARAGE

Under Construction

Offering space and connectedness in one design.

The Botticelli takes 4 bedrooms, 2 living spaces, elegant kitchen with walk-in pantry, and turns it into a home that was made for memories. With a generous frontage and grand living spaces, the Botticelli brings fun and form to life.

BOTTICELLI

UNDER CONSTRUCTION

SPECIFICATIONS:

Home Size: 201.72m²

Lot Size: 375m²

Living Area: 165.49m²

Porch: 1.5m²

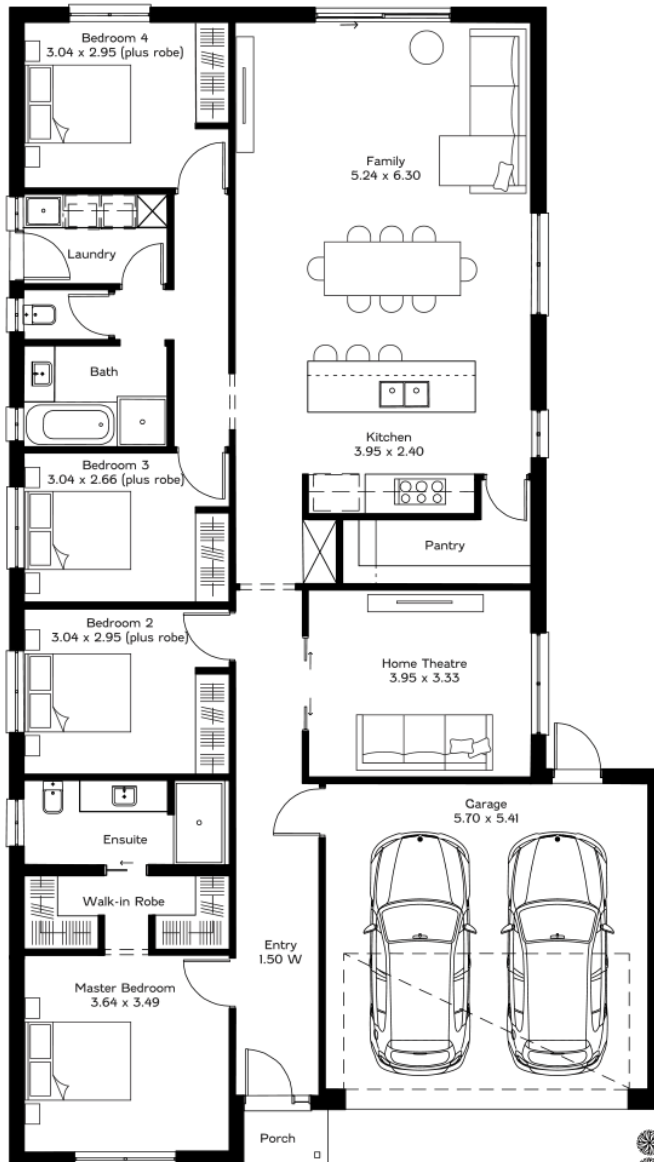
Garage: 34.73m²

Width: 11.5m inc. garage

Length: 20.45m

INCLUSIONS:

- 2.7m High Ceilings
- Ducted Reverse Cycle Air Conditioning
- Carpet to bedrooms and home theatre
- Timber laminate flooring to living areas and entry
- Tiles to wet areas
- Solid Surface kitchen benchtops
- Premium kitchen and bathroom accessories
- Stainless steel appliances including fridge with ice maker
- Smart Home Automation System – Ring Doorbell and Google Nest
- Front landscaping including irrigation
- Fencing to sides and rear



Interested in making an offer?
Simply scan this QR code.



25 North Tce Hackney SA Ph 08 8366 0020 liberty-homes.com.au

The land referred to in this promotion may not be owned by us. In that event, we make no representation and, to the extent permissible at law, we disclaim all liability, as to the suitability of such land to build on, or the suitability of any house design, or otherwise. You must satisfy yourself of that by inspection, or by taking professional advice, or otherwise. The floorplan is not to scale, measurements are indicative and in metres. Floorplans, elevations and photos in this brochure are for illustration purposes only. Please refer to the working drawings you receive upon signing a contract for precise measurements. To the extent that there is any conflict between the material contained in this brochure and the contract of sale, the purchaser acknowledges that the terms of the contract of sale will at all times prevail. E&OE. Expressions of interest may be submitted [here](#). Alan Hickinbotham Pty Ltd ABN 13 007 567 222, RLA 230557. Construction Services Australia Pty Ltd ABN 99 007 641 787, Building Licence C8969