

201 (NO. 5) VINE WAY ALDINGA BEACH

\$780,000

**Liberty
Homes**

**MOVE
IN LATE
2024**



2 LIVING 3 BEDROOMS 2 BATHROOMS DOUBLE GARAGE

Under Construction

Inspired to bring family together while offering space for work and play, our Rembrandt Alfresco home is perfect for young families and those searching for new beginnings.

This design offers 3 generous bedrooms including a large luxurious master suite, 2 bathrooms and expansive family living space. Showcasing a generous frontage and lovely alfresco space for kids young and old to enjoy, the Rembrandt Alfresco encapsulates how modern families live today.

Aldinga Green is an exciting new community in the heart of the vibrant cosmopolitan South. A coastal estate that brings together family and holiday living in one beautiful location, Aldinga Green is the coastal community that has everything you need within arms reach. With shopping precincts, sought after schools, and proximity to the McLaren Vale wine region, the only thing that's missing is you and the family.

REMBRANDT ALFRESCO

UNDER CONSTRUCTION

SPECIFICATIONS:

Home Size: 216.71m²

Lot Size: 450m²

Living Area: 156.81m²

Porch: 1.6m²

Garage: 35.38m²

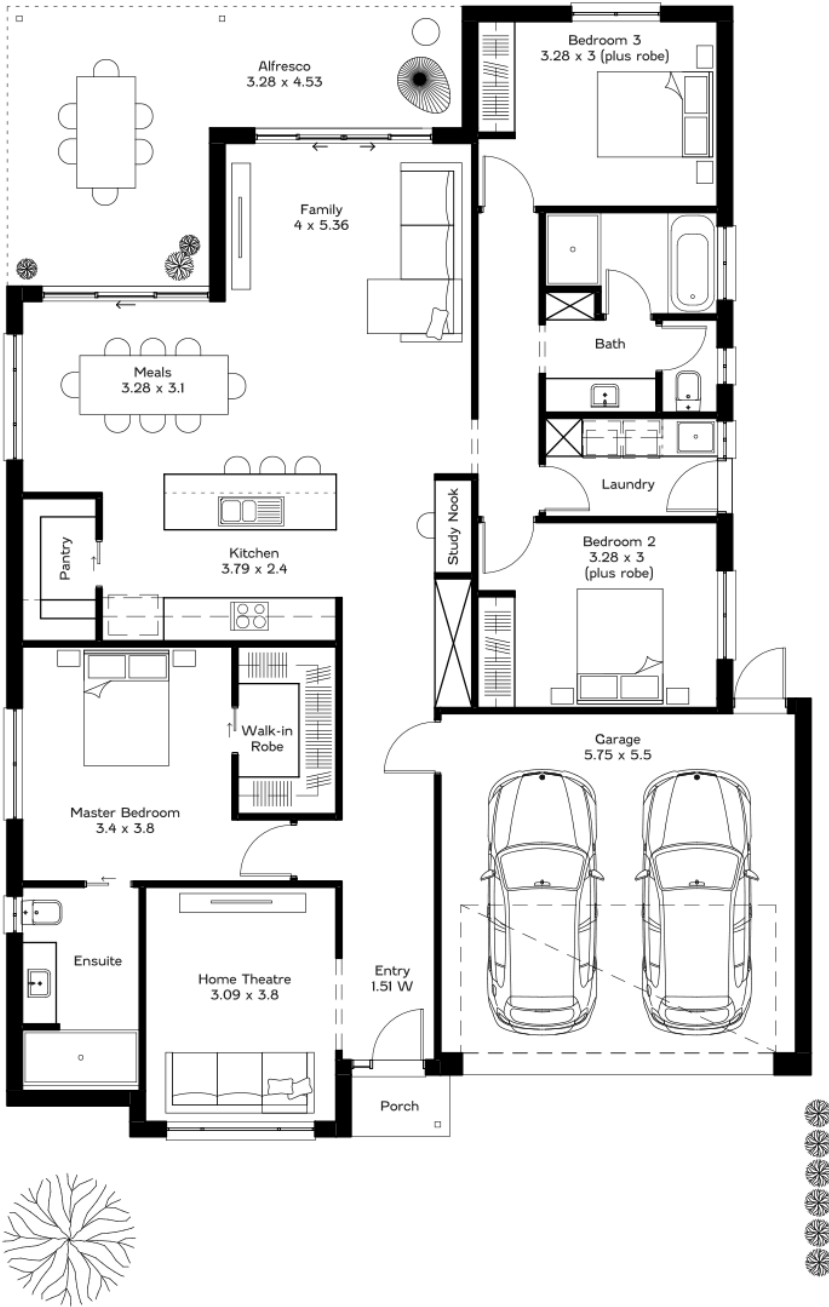
Alfresco: 22.92m²

Width: 13m inc. garage

Length: 18.29m

INCLUSIONS:

- 2.7m High Ceilings
- Ducted Reverse Cycle Air Conditioning
- Carpet to bedrooms and home theatre
- Timber laminate flooring to living areas and entry
- Tiles to wet areas
- Solid Surface kitchen benchtops
- Premium kitchen and bathroom accessories
- Stainless steel appliances including fridge with ice maker
- Smart Home Automation System – Ring Doorbell and Google Nest
- Front landscaping including irrigation
- Fencing to sides and rear



Interested in making an offer?
Simply scan this QR code.



25 North Tce Hackney SA Ph 08 8366 0020 liberty-homes.com.au

The land referred to in this promotion may not be owned by us. In that event, we make no representation and, to the extent permissible at law, we disclaim all liability, as to the suitability of such land to build on, or the suitability of any house design, or otherwise. You must satisfy yourself of that by inspection, or by taking professional advice, or otherwise. The floorplan is not to scale, measurements are indicative and in metres. Floorplans, elevations and photos in this brochure are for illustration purposes only. Please refer to the working drawings you receive upon signing a contract for precise measurements. To the extent that there is any conflict between the material contained in this brochure and the contract of sale, the purchaser acknowledges that the terms of the contract of sale will at all times prevail. E&OE.
Expressions of interest may be submitted [here](#). Alan Hickenbotham Pty Ltd ABN 13 007 567 222, RLA 230557. Construction Services Australia Pty Ltd ABN 99 007 641 787, Building Licence C8969