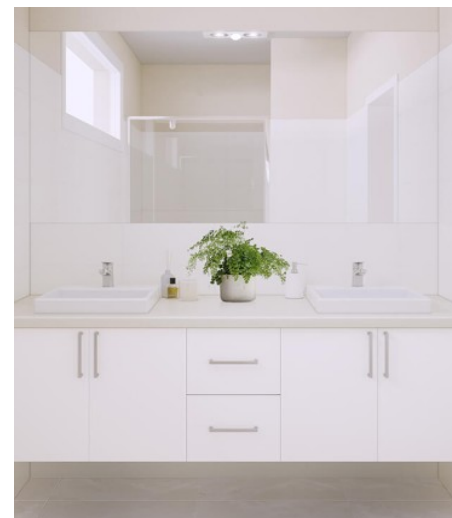


111 (NO. 19) STARFISH DRIVE ALDINGA BEACH

**\$749,000**

**Liberty  
Homes**

**Move in  
Early  
2024**



**2 LIVING 4 BEDROOMS 2 BATHROOMS DOUBLE GARAGE**

**Under Construction**

With a 14 metre frontage, our Warhol home is cleverly designed for easy-going living with plenty of room for a growing family

With bountiful living and dining spaces and a private home theatre, there's opportunity for all members of the family to come together to celebrate, and step away for solace. Enjoy your walk-in master bedroom robe, kitchen pantry and large laundry with the 4 bedroom Warhol; modern living never looked so good.

Aldinga Green is an exciting new community in the heart of the vibrant cosmopolitan South. A coastal estate that brings together family and holiday living in one beautiful location, Aldinga Green is the coastal community that has everything you need within arms reach. With shopping precincts, sought after schools, and proximity to the McLaren Vale wine region, the only thing that's missing is you and the family.

# WARHOL

UNDER CONSTRUCTION

## SPECIFICATIONS:

Home Size: 240.78m<sup>2</sup>

Lot Size: 520m<sup>2</sup>

Living Area: 192.62m<sup>2</sup>

Porch: 2.43m<sup>2</sup>

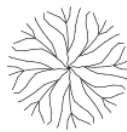
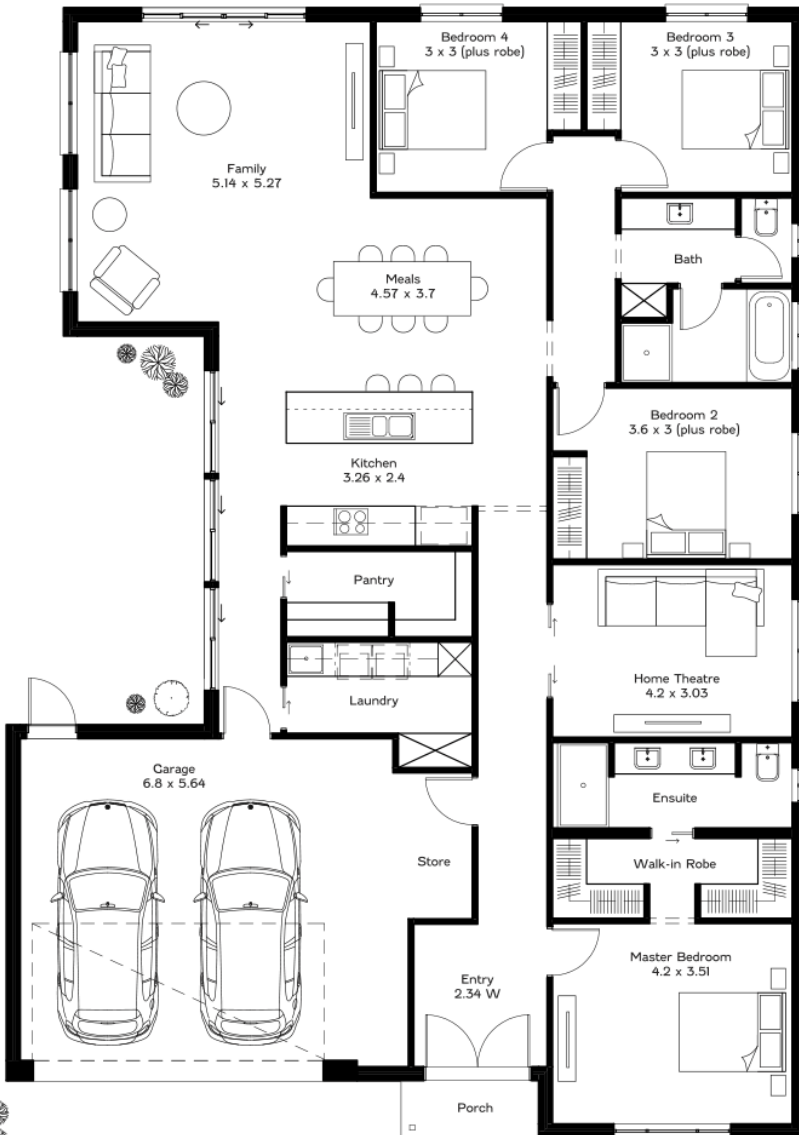
Garage: 45.73m<sup>2</sup>

Width: 14m inc. garage

Length: 19.79m

## INCLUSIONS:

- 2.7m High Ceilings
- Ducted Reverse Cycle Air Conditioning
- Carpet to bedrooms and home theatre
- Timber laminate flooring to living areas and entry
- Tiles to wet areas
- Caesarstone kitchen benchtops
- Premium kitchen and bathroom accessories
- Stainless steel appliances including fridge with ice maker
- Smart Home Automation System – Ring Doorbell and Google Nest
- Front landscaping including irrigation
- Fencing to sides and rear



Interested in making an offer?  
Simply scan this QR code.



25 North Tce Hackney SA Ph 08 8366 0020 liberty-homes.com.au

The land referred to in this promotion may not be owned by us. In that event, we make no representation and, to the extent permissible at law, we disclaim all liability, as to the suitability of such land to build on, or the suitability of any house design, or otherwise. You must satisfy yourself of that by inspection, or by taking professional advice, or otherwise. The floorplan is not to scale, measurements are indicative and in metres. Floorplans, elevations and photos in this brochure are for illustration purposes only. Please refer to the working drawings you receive upon signing a contract for precise measurements. To the extent that there is any conflict between the material contained in this brochure and the contract of sale, the purchaser acknowledges that the terms of the contract of sale will at all times prevail. E&OE. Expressions of interest may be submitted [here](#). Alan Hickenbotham Pty Ltd ABN 13 007 567 222, RLA 230557. Construction Services Australia Pty Ltd ABN 99 007 641 787, Building Licence C8969