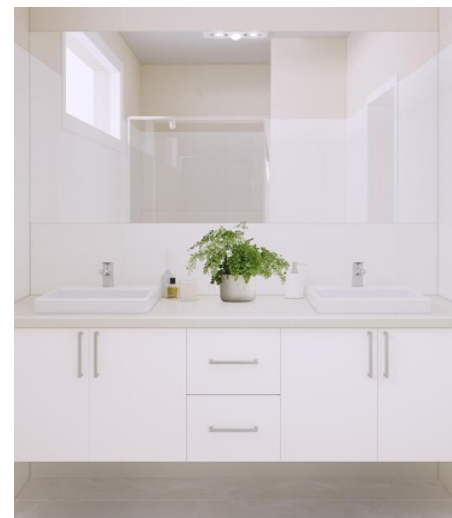


**Move in  
Early  
2024**



**2 LIVING 3 BEDROOMS 2 BATHROOMS DOUBLE GARAGE**

**Under Construction**

Where entertainment is at the heart of living, our Chopin Alfresco home brings your family together to celebrate milestones and enjoy spacious living.

With open family space and separate home theatre, the kids can be entertained while the adults unwind. Offering alfresco living, 3 spacious bedrooms including a spacious master suite and stunning generous frontage, the Chopin Alfresco is designed for the simple yet stylish family.

Aldinga Green is an exciting new community in the heart of the vibrant cosmopolitan South. A coastal estate that brings together family and holiday living in one beautiful location, Aldinga Green is the coastal community that has everything you need within arms reach. With shopping precincts, sought after schools, and proximity to the McLaren Vale wine region, the only thing that's missing is you and the family.

# CHOPIN ALFRESCO

UNDER CONSTRUCTION

## SPECIFICATIONS:

Home Size: 243.18m<sup>2</sup>

Lot Size: 505m<sup>2</sup>

Living Area: 186.06m<sup>2</sup>

Porch: 1.84m<sup>2</sup>

Garage: 40.16m<sup>2</sup>

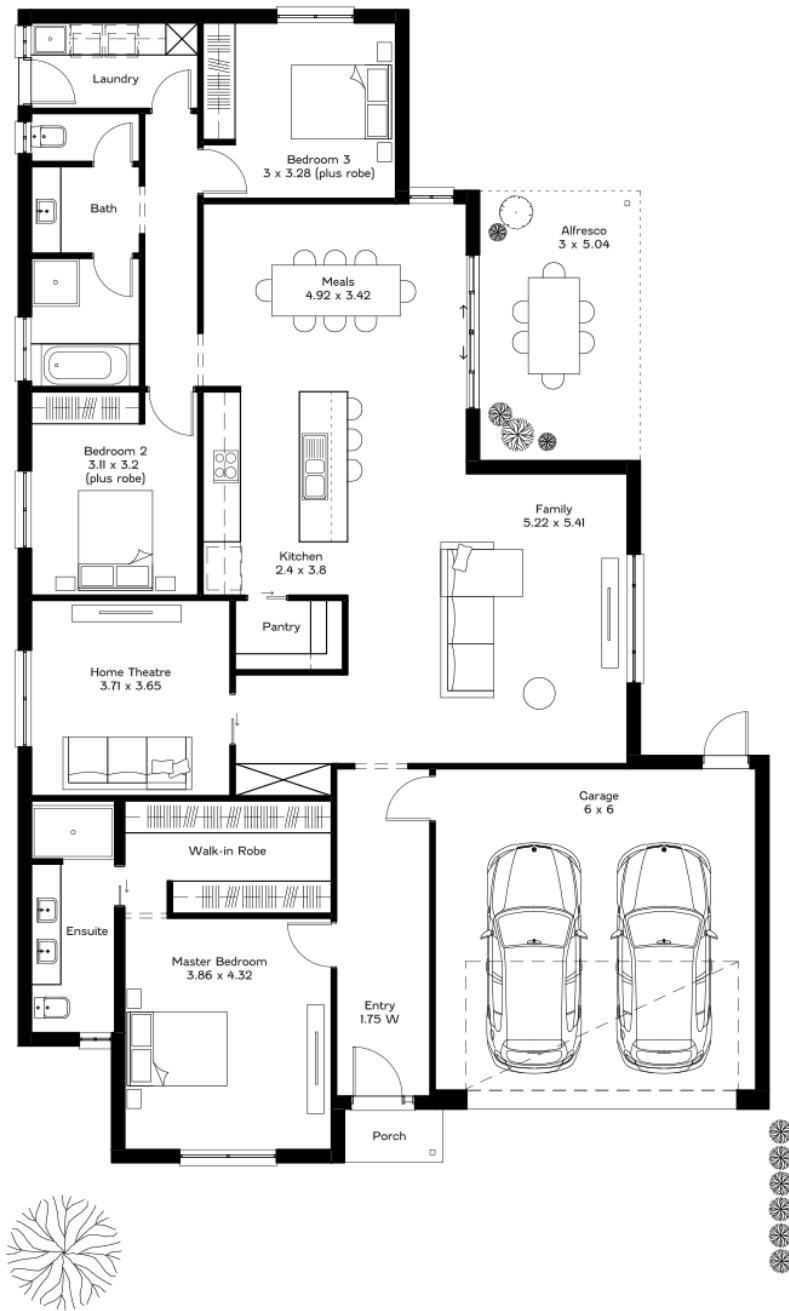
Alfresco: 15.12m<sup>2</sup>

Width: 14m inc. garage

Length: 21.5m

## INCLUSIONS:

- 2.7m High Ceilings
- Ducted Reverse Cycle Air Conditioning
- Carpet to bedrooms and home theatre
- Timber laminate flooring to living areas and entry
- Tiles to wet areas
- Caesarstone kitchen benchtops
- Premium kitchen and bathroom accessories
- Stainless steel appliances including fridge with ice maker
- Smart Home Automation System – Ring Doorbell and Google Nest
- Front landscaping including irrigation
- Fencing to sides and rear



Interested in making an offer?  
Simply scan this QR code.



25 North Tce Hackney SA Ph 08 8366 0020 liberty-homes.com.au

The land referred to in this promotion may not be owned by us. In that event, we make no representation and, to the extent permissible at law, we disclaim all liability, as to the suitability of such land to build on, or the suitability of any house design, or otherwise. You must satisfy yourself of that by inspection, or by taking professional advice, or otherwise. The floorplan is not to scale, measurements are indicative and in metres. Floorplans, elevations and photos in this brochure are for illustration purposes only. Please refer to the working drawings you receive upon signing a contract for precise measurements. To the extent that there is any conflict between the material contained in this brochure and the contract of sale, the purchaser acknowledges that the terms of the contract of sale will at all times prevail. E&OE. Expressions of interest may be submitted [here](#). Alan Hickinbotham Pty Ltd ABN 13 007 567 222, RLA 230557. Construction Services Australia Pty Ltd ABN 99 007 641 787, Building Licence C8969